

BOM		
ITEM#	DESCRIPTION	MATERIAL
1	ANGLE SUPPORT	CARBON STEEL
2	U - BOLT	GALVANIZED STEEL
3	PAD (0.25" THK.)	TEFLON

MAYEKAWA PART NO.			
STD50005-1	-1	-2	-3
-1	ANGLE SIZE -SELECT ROW FROM	TABLE - 1	
-2	LENGTH REQUIRED - SELECT ROW FROM	TABLE - 2	
-3	HEIGHT REQUIRED - FOLLOW GIVEN LENGTH	ISO DWG	

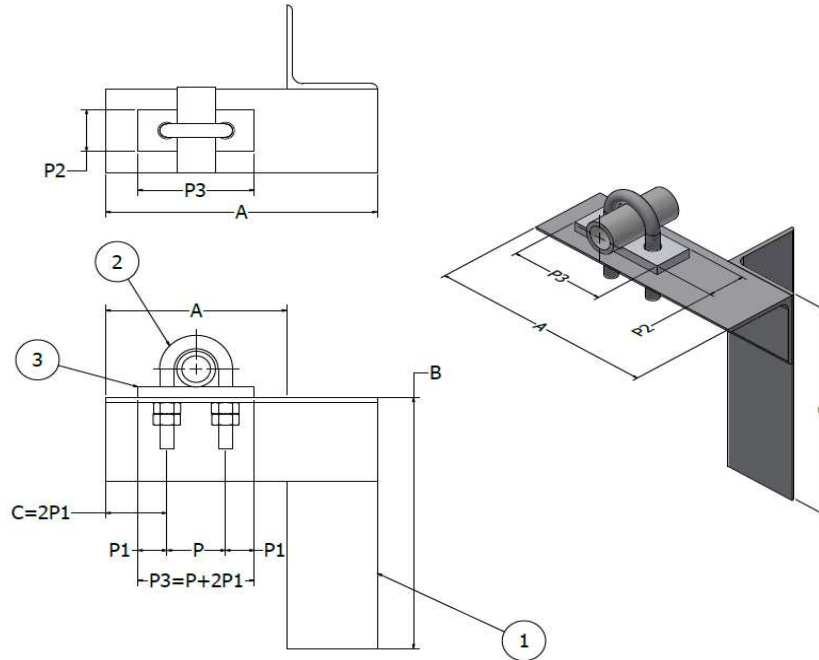


TABLE - 1 (ANGLE SIZE)	
LINE NUMBER	ANGLE SIZE
	(in)
1	2 X 2
2	2.5 X 2.5
3	3 X 3
4	4 X 4
5	6 X 6

TABLE - 2 (LENGTH REQUIRED)								
COLUMN NUMBER	A	B	P	P1	P2	P3=2P1+P	U-Bolt Required	PIPE SIZE
	(in)	(in)	(in)	(in)	(in)	(in)		(in)
0	3.5	*	1	0.63	1	2.48	Y	0.375
1	4	*	1.22	0.63	1	2.48	Y	0.50
2	4.5	*	1.46	0.63	1	2.72	Y	0.75
3	5	*	1.73	0.63	1	2.99	Y	1
4	5.5	*	2.44	0.71	1.18	3.86	Y	1.5
5	6	*	2.91	0.71	1.18	4.33	Y	2
6	7	*	4	0.79	1.57	5.58	Y	3
7	9	*	5.27	1	2	7.27	Y	4
8	11	*	7.32	1	3.15	9.32	Y	6
9	13	*	9.29	1	4	11.29	Y	8

0	24.07.23	AJD	IES	
REVISION	DATE	BY	APPROVED	DESCRIPTION

**NOTES :**  
1. METRIC SUBSTITUTES ARE ACCEPTABLE  
2. \* - TO BE DEFINED ON CASE BY CASE. FOLLOW PIPE SUPPORT LIST INCLUDED IN ISO DWG.

TITLE:	PIPE SUPPORT DETAIL - 1
DRAWING:	STD 50005-1
REVISION:	00
SHEET:	1 OF 1